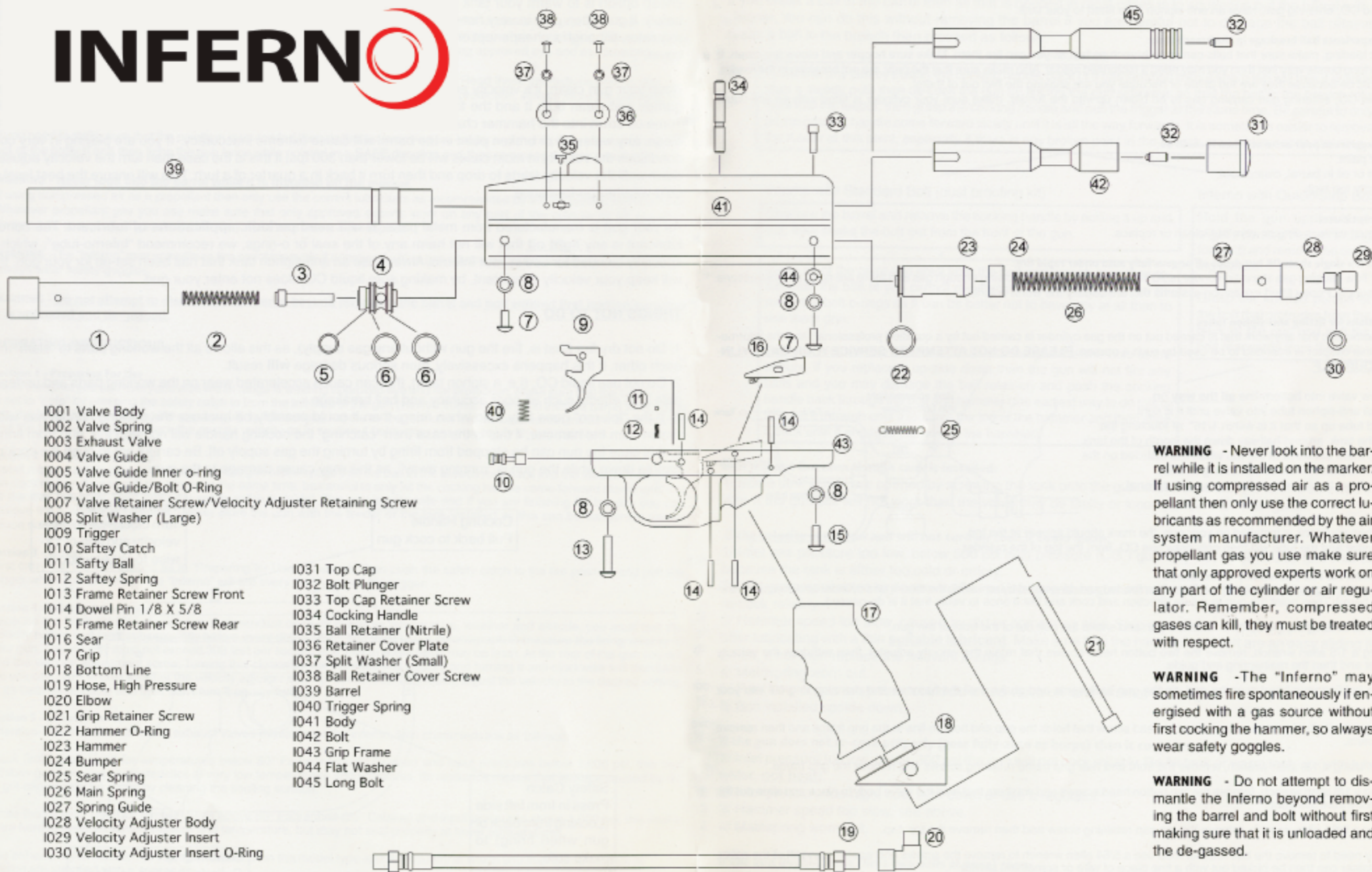


INFERNO



- I001 Valve Body
- I002 Valve Spring
- I003 Exhaust Valve
- I004 Valve Guide
- I005 Valve Guide Inner o-ring
- I006 Valve Guide/Bolt O-Ring
- I007 Valve Retainer Screw/Velocity Adjuster Retaining Screw
- I008 Split Washer (Large)
- I009 Trigger
- I010 Safety Catch
- I011 Safety Ball
- I012 Safety Spring
- I013 Frame Retainer Screw Front
- I014 Dowel Pin 1/8 X 5/8
- I015 Frame Retainer Screw Rear
- I016 Sear
- I017 Grip
- I018 Bottom Line
- I019 Hose, High Pressure
- I020 Elbow
- I021 Grip Retainer Screw
- I022 Hammer O-Ring
- I023 Hammer
- I024 Bumper
- I025 Sear Spring
- I026 Main Spring
- I027 Spring Guide
- I028 Velocity Adjuster Body
- I029 Velocity Adjuster Insert
- I030 Velocity Adjuster Insert O-Ring
- I031 Top Cap
- I032 Bolt Plunger
- I033 Top Cap Retainer Screw
- I034 Cocking Handle
- I035 Ball Retainer (Nitrile)
- I036 Retainer Cover Plate
- I037 Split Washer (Small)
- I038 Ball Retainer Cover Screw
- I039 Barrel
- I040 Trigger Spring
- I041 Body
- I042 Bolt
- I043 Grip Frame
- I044 Flat Washer
- I045 Long Bolt

WARNING - Never look into the barrel while it is installed on the marker. If using compressed air as a propellant then only use the correct lubricants as recommended by the air system manufacturer. Whatever propellant gas you use make sure that only approved experts work on any part of the cylinder or air regulator. Remember, compressed gases can kill, they must be treated with respect.

WARNING -The "Inferno" may sometimes fire spontaneously if energised with a gas source without first cocking the hammer, so always wear safety goggles.

WARNING - Do not attempt to dismantle the Inferno beyond removing the barrel and bolt without first making sure that it is unloaded and the de-gassed.